

## The Timbers



### 3~8 Acre +/- Residential Lots Hawk Point, MO

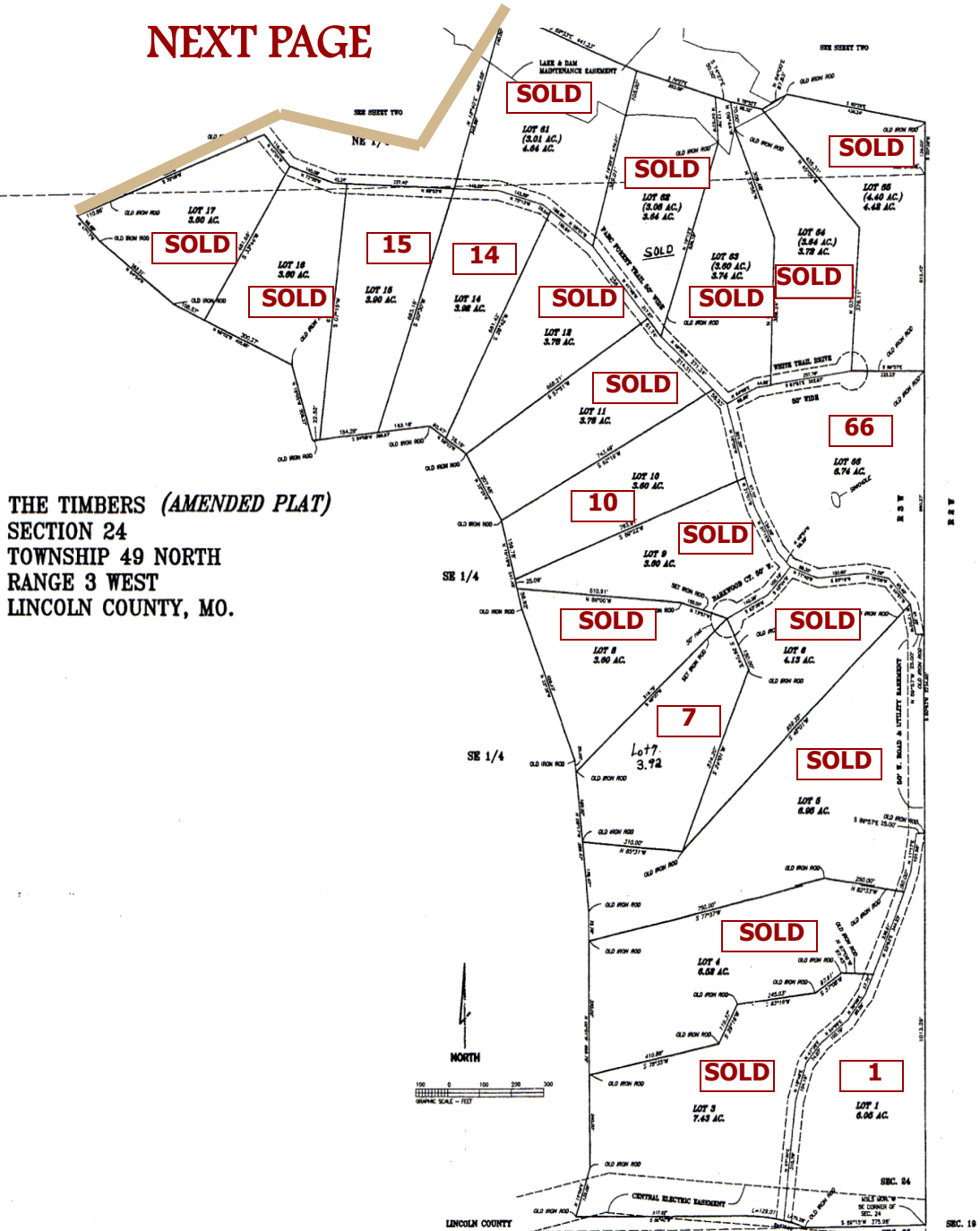
Gorgeous property with gently rolling terrain with many different types of lots to offer. You may choose from a wooded lot, pasture lot and or bluff lot. In the middle of this beautiful subdivision sits an 8 acre lake.  
Numerous lots suitable for horses.

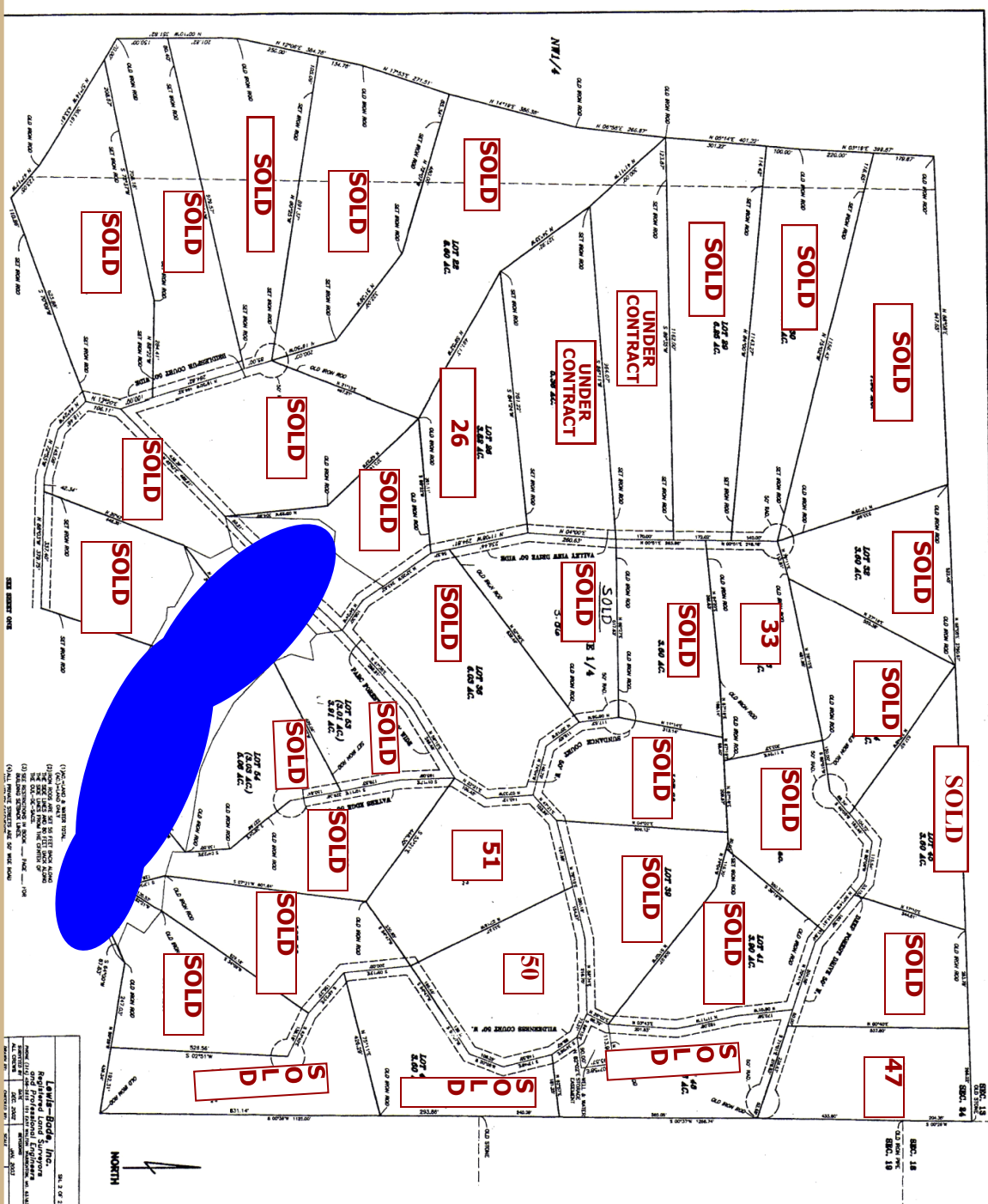
Water and Electric at Site

Award Winning Lincoln County School District.

Call Martin for more information  
Cell: 314-565-7818 ~ Office 636-462-5555  
[martin@meyerlistings.com](mailto:martin@meyerlistings.com)  
Agent Owned

**NEXT PAGE**





# The Timbers Price Sheet

Lot#	Acreage	Price	Lot#	Acreage	Price
1	6.05	\$58,000	35	3.86	SOLD
3	7.43	SOLD	36	6.03	SOLD
4	6.52	SOLD	38	3.60	SOLD
5	8.95	SOLD	39	3.86	SOLD
6	4.13	SOLD	41	3.90	SOLD
7	3.92	\$48,000	42	3.61	SOLD
8	3.60	SOLD	44	3.65	SOLD
9	3.60	SOLD	45	3.60	SOLD
10	3.60	\$46,000	46	3.60	SOLD
11	3.78	SOLD	47	3.60	\$46,000
12	3.78	SOLD	48	3.61	SOLD
14	3.92	\$48,000	49	3.60	SOLD
15	3.90	\$48,000	50	3.95	\$48,000
16	3.60	SOLD	51	4.46	\$51,000
17	3.60	SOLD	53	3.91	SOLD
18	5.61	SOLD	54	5.06	SOLD
19	4.97	SOLD	55	4.22	SOLD
20	5.67	SOLD	56	3.67	SOLD
21	6.12	SOLD	57	3.91	SOLD
22	8.60	SOLD	58	3.88	SOLD
23	5.41	SOLD	59	3.74	SOLD
25	3.70	SOLD	60	3.89	SOLD
26	3.82	\$41,000	61	4.65	SOLD
27	5.36	UNDER CONTRACT	62	3.64	SOLD
28	4.91	UNDER CONTRACT	63	3.74	SOLD
29	6.25	SOLD	64	3.72	SOLD
30	5.99	SOLD	65	4.42	SOLD
31	7.93	SOLD	66	6.74	\$62,000
32	3.60	SOLD			
33	3.68	\$43,000			
34	3.60	SOLD			